

## STATISTICAL ANALYSIS OF GROWTH IN THE INTER-AMERICAN DIVISION FROM 2000 TO 2019

By Daniel A. Mora

### 1. Longitudinal Statistical Analysis

YEAR	MEMBERS ADDED				MEMBERS SUBTRACTED					Percent Growth	Percent Loss
	Baptism	POF	Letter R.	Adjust.	Letter G.	Deaths	Dropped	Missing	Adjust.		
2000	162.419	1.665	5.559	283	7.220	3.951	33.930	11.088	0	66,94%	33,06%
2001	158.755	2.501	248.597	0	250.909	5.060	46.704	17.158	3.678	21,07%	78,93%
2002	175.672	2.839	56.803	1.557	58.470	4.535	35.763	11.090	0	53,62%	46,38%
2003	178.545	3.562	145.504	0	147.850	5.734	29.864	13.523	173	39,82%	60,18%
2004	153.555	4.080	23.098	1.612	25.880	4.796	31.679	14.192	2.291	56,76%	43,24%
2005	183.308	3.713	131.834	1.844	134.811	4.786	31.874	13.806	13.268	38,09%	61,91%
2006	207.052	5.097	118.652	6.852	121.964	4.866	31.115	11.383	8.860	47,22%	52,77%
2007	194.815	4.190	50.113	1.960	52.314	4.774	26.612	11.536	4.533	60,26%	39,74%
2008	219.730	4.048	243.354	2.766	244.907	6.054	29.816	13.953	6.051	36,00%	64,00%
2009	182.451	3.662	79.053	3.605	75.315	6.562	31.021	9.502	2.749	53,44%	46,56%
2010	191.146	2.987	78.237	9.935	79.455	7.733	36.425	16.014	10.184	46,93%	53,07%
2011	189.641	3.338	102.756	8.267	104.867	6.144	40.896	18.680	4.064	42,55%	57,45%
2012	186.614	3.923	7.234	3.570	9.392	6.383	50.659	23.897	8.446	50,94%	49,06%
2013	178.401	4.492	10.141	10.253	14.604	10.906	77.181	28.404	21.570	24,90%	75,10%
2014	172.437	4.423	117.152	8.227	120.445	12.057	91.616	115.848	40.143	0%	126%
2015	170.805	4.122	73.932	2.563	81.585	12.720	53.808	77.861	18.275	2,85%	97,15%
2016	173.725	3.797	243.619	9.072	245.909	6.985	29.950	11.871	24.635	25,77%	74,23%
2017	176.452	4.063	146.766	4.428	146.787	8.058	41.248	24.135	50.356	18,43%	81,57%
2018	183.164	4.935	38.163	9.805	40.755	11.868	85.350	75.750	72.336	0%	121,18%
2019	179.410	4.869	36.762	10.880	39.741	10.257	83.339	77.299	50.531	0%	112,61%
<b>TOTAL:</b>	<b>3.618.097</b>	<b>76.306</b>	<b>1.957.329</b>	<b>97.479</b>	<b>2.003.180</b>	<b>144.229</b>	<b>918.850</b>	<b>596.990</b>	<b>342.143</b>		

\*Contain Former Member's Baptisms from 2017 to 2019)

**TOTAL MEMBERS ADDED: 5.749.211**

**TOTAL MEMBERS SUBTRACTED: 4.005.392**

TOTAL GROWTH **1.743.819**

69,67 % Percent Loss

30,33 % Percent Growth

**STATISTICAL ANALYSIS OF GROWTH IN THE INTER-AMERICAN DIVISION  
FROM 2000 TO 2019**

By Daniel A. Mora

**2. Membership at Beginning and End Year**

<b>YEAR</b>	<b>M. at End of Year</b>	<b>M. at Beginning of Year</b>	<b>TOTAL</b>
2000	2.078.226	1.964.489	113.737
2001	2.164.570	2.078.226	86.344
2002	2.291.583	2.164.570	127.013
2003	2.422.050	2.291.583	130.467
2004	2.525.557	2.422.050	103.507
2005	2.647.711	2.525.557	122.154
2006	2.807.176	2.647.711	159.465
2007	2.958.485	2.807.176	151.309
2008	3.127.602	2.958.485	169.117
2009	3.271.224	3.127.602	143.622
2010	3.403.718	3.271.224	132.494
2011	3.533.069	3.403.718	129.351
2012	3.635.633	3.533.069	102.564
2013	3.686.255	3.635.633	50.622
2014	3.608.385	3.686.255	-77.870
2015	3.615.558	3.608.385	7.173
2016	3.726.421	3.615.558	110.863
2017	3.787.546	3.726.421	61.125
2018	3.737.554	3.787.546	-49.992
2019	3.708.308	3.737.554	-29.246

**TOTAL GROWTH: 1.743.819**

<b>M. at Beginning and End Year for Quinquennium</b>			
	<b>2011 to 2015</b>	<b>2016 to 2019</b>	
<b>2011</b>	129.351	<b>2016</b>	110.863
<b>2012</b>	102.564	<b>2017</b>	61.125
<b>2013</b>	50.622	<b>2018</b>	-49.992
<b>2014</b>	-77.870	<b>2019</b>	-29.246
<b>2015</b>	7.173		
<b>TOTAL:</b>	<b>211.840</b>		<b>92.750</b>

**STATISTICAL ANALYSIS OF GROWTH IN THE INTER-AMERICAN DIVISION  
FROM 2000 TO 2019**

By Daniel A. Mora

**3. "Vision One Million"**

**2011-2015**

YEAR	MEMBERS ADDED				MEMBERS SUBTRACTED				
	Baptism	POF	Letter R.	Adjust.	Letter G.	Deaths	Dropped	Missing	Adjust.
2011	189.641	3.338	102.756	8.267	104.867	6.144	40.896	18.680	4.064
2012	186.614	3.923	7.234	3.570	9.392	6.383	50.659	23.897	8.446
2013	178.401	4.492	10.141	10.253	14.604	10.906	77.181	28.404	21.570
2014	172.437	4.423	117.152	8.227	120.445	12.057	91.616	115.848	40.143
2015	170.805	4.122	73.932	2.563	81.585	12.720	53.808	77.861	18.275
<b>TOTAL:</b>	<b>897.898</b>	<b>20.298</b>	<b>311.215</b>	<b>32.880</b>	<b>330.893</b>	<b>48.210</b>	<b>314.160</b>	<b>264.690</b>	<b>92.498</b>

**TOTAL MEMBERS ADDED:** 1.262.291

**TOTAL MEMBERS SUBTRACTED:** 1.050.451

**TOTAL GROWTH 211.840**

83,22 % Percent Loss

16,78 % Percent Growth

**2016-2019**

YEAR	MEMBERS ADDED				MEMBERS SUBTRACTED				
	Baptism	POF	Letter R.	Adjust.	Letter G.	Deaths	Dropped	Missing	Adjust.
2016	173.725	3.797	243.619	9.072	245.909	6.985	29.950	11.871	24.635
2017	176.452	4.063	146.766	4.428	146.787	8.058	41.248	24.135	50.356
2018	183.164	4.935	38.163	9.805	40.755	11.868	85.350	75.750	72.336
2019	179.410	4.869	36.762	10.880	39.741	10.257	83.339	77.299	50.531
<b>TOTAL:</b>	<b>712.751</b>	<b>17.664</b>	<b>465.310</b>	<b>34.185</b>	<b>473.192</b>	<b>37.168</b>	<b>239.887</b>	<b>189.055</b>	<b>197.858</b>

**TOTAL MEMBERS ADDED:** 1.229.910

**TOTAL MEMBERS SUBTRACTED:** 1.137.160

**TOTAL GROWTH 92.750**

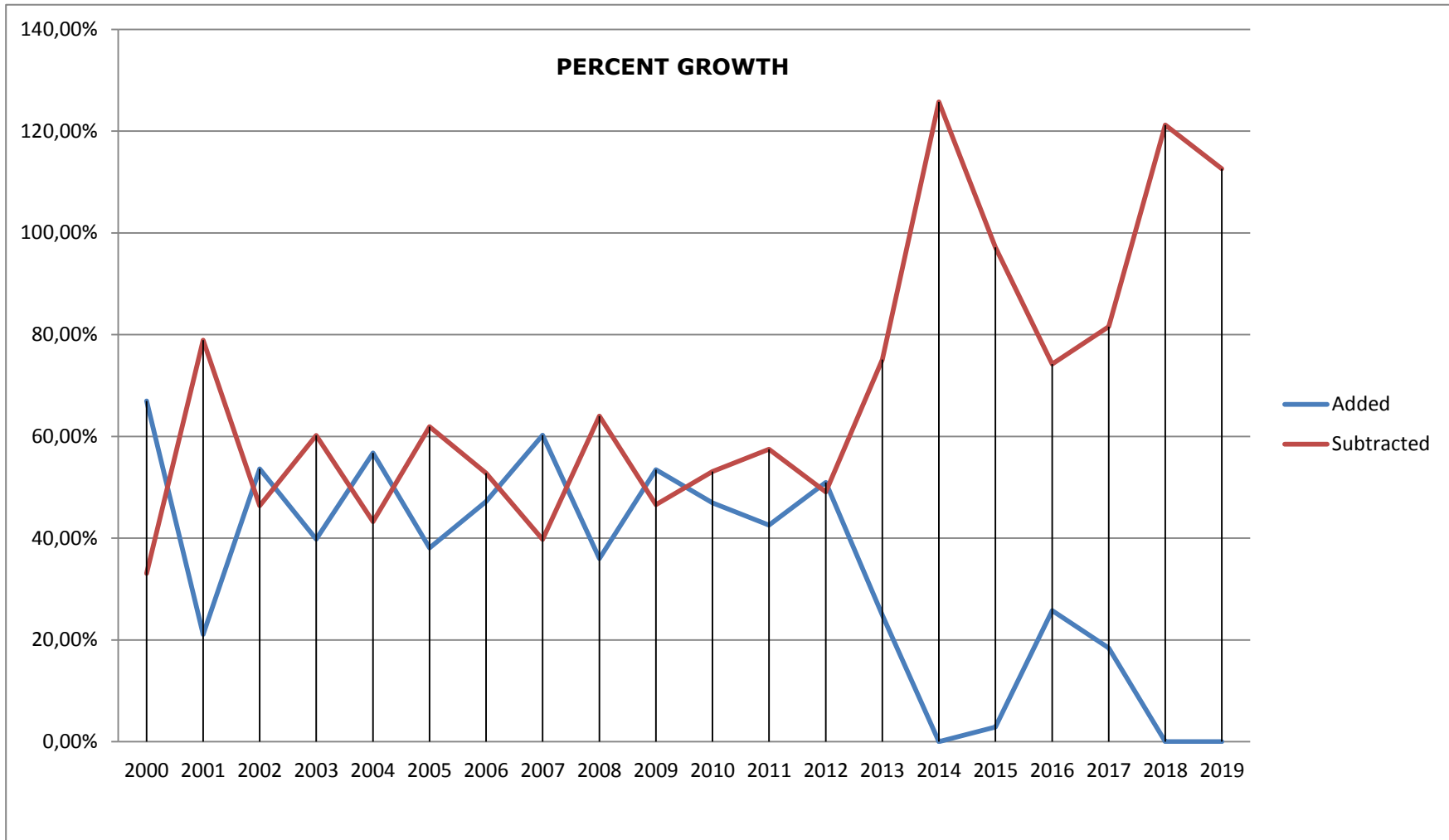
92,46 % Percent Loss

7,54 % Percent Growth

# STATISTICAL ANALYSIS OF GROWTH IN THE INTER-AMERICAN DIVISION FROM 2000 TO 2019

By Daniel A. Mora

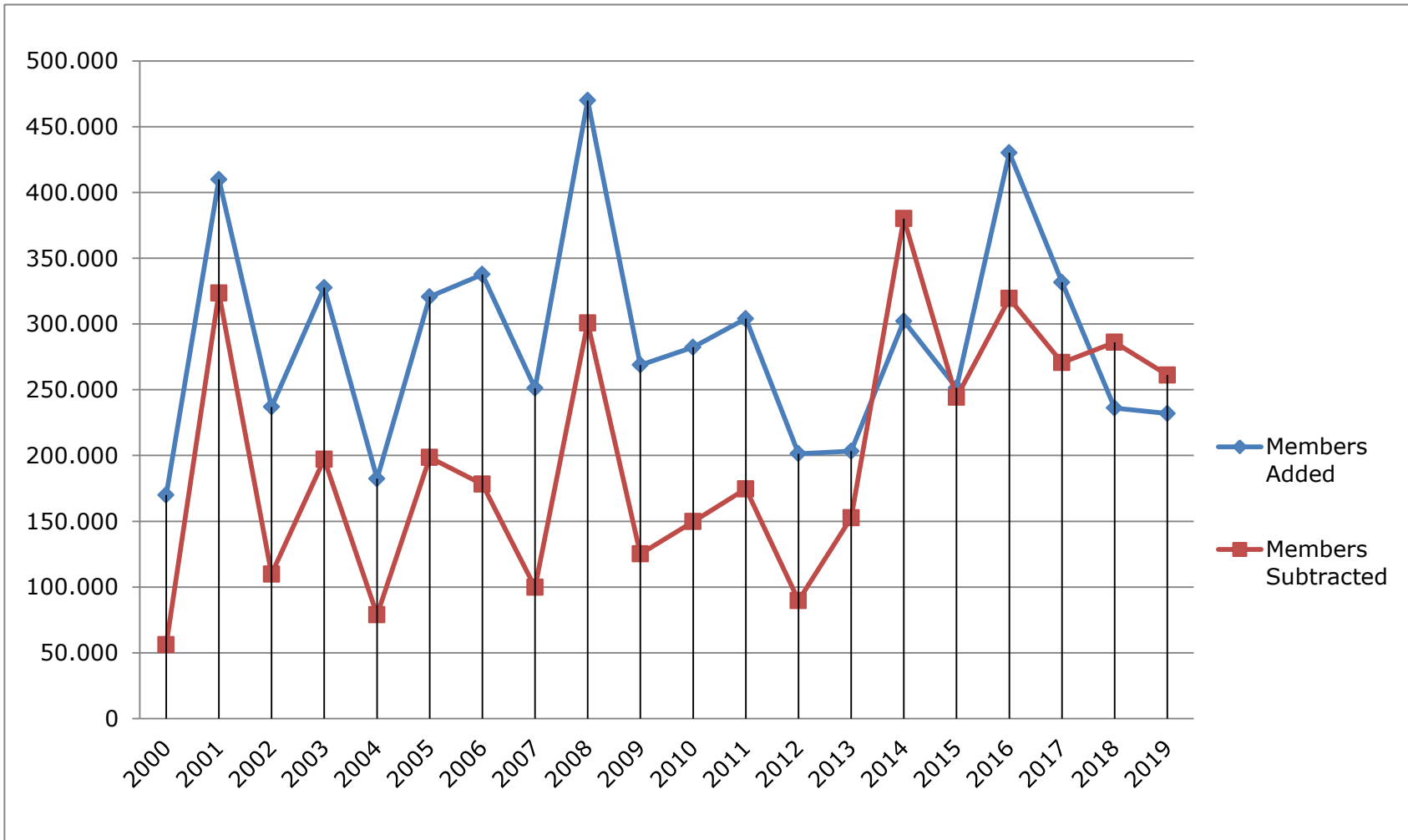
## Percent Growht for Year



# STATISTICAL ANALYSIS OF GROWTH IN THE INTER-AMERICAN DIVISION FROM 2000 TO 2019

By Daniel A. Mora

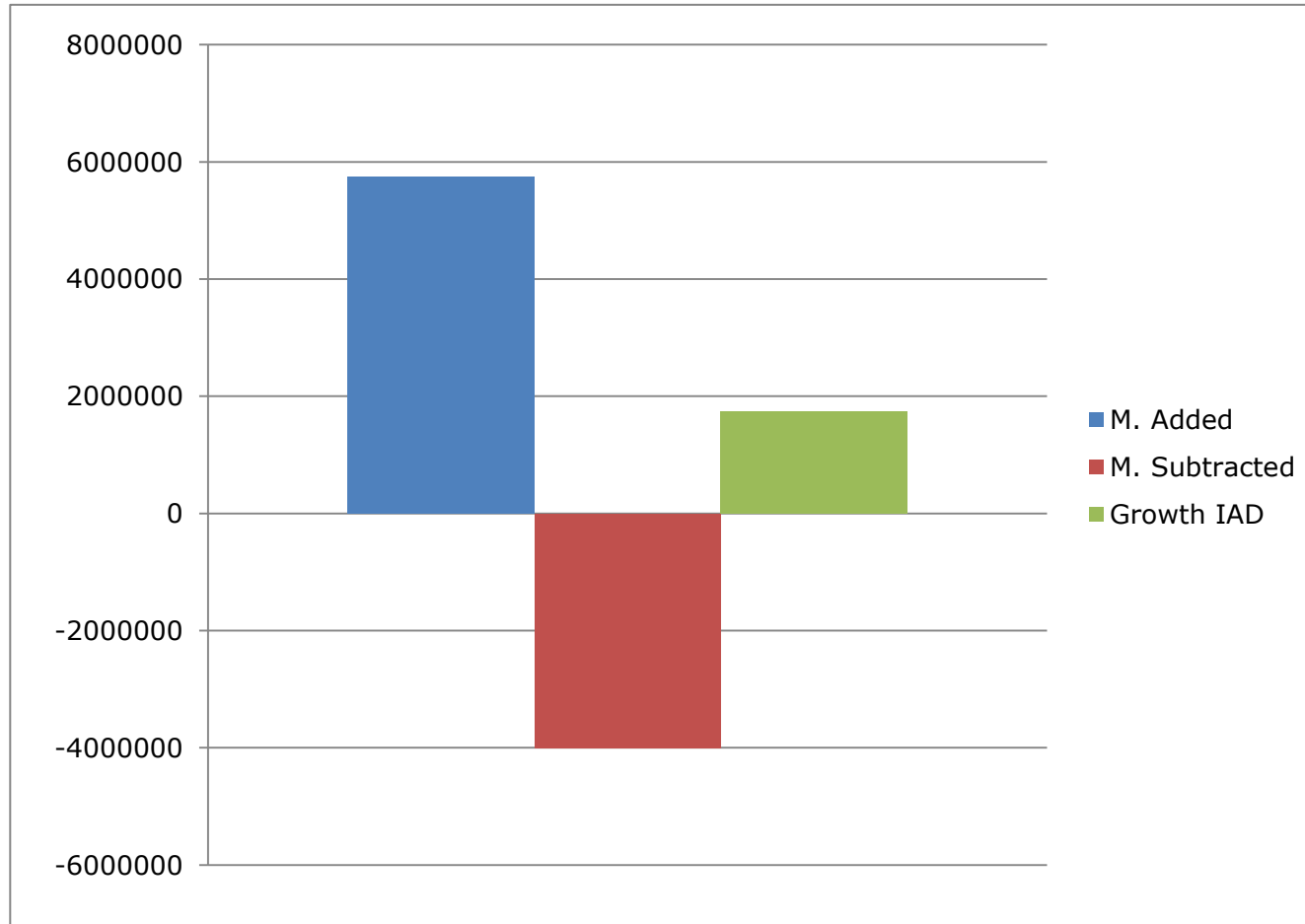
## Members Added and Subtracted for Year



# STATISTICAL ANALYSIS OF GROWTH IN THE INTER-AMERICAN DIVISION FROM 2000 TO 2019

By Daniel A. Mora

## Totals Members Added, Subtracted and Growth (2000 to 2019)



# STATISTICAL ANALYSIS OF GROWTH IN THE INTER-AMERICAN DIVISION FROM 2000 TO 2019

By Daniel A. Mora

## BIBLIOGRAPHY

- 2000** Office of Archives, Statistics and Research of General Conference of Seventh-day Adventists, *138th Annual Statistical Report - 2000* (Silver Spring, MD: General Conference, 2000), 20.
- 2001** Adventist Statistics and Research, *139th Annual Statistical Report—2001*, 20.
- 2002** ASR, *140th Annual Statistical Report—2001*, 20.
- 2003** ASR, *141st Annual Statistical Report—2003*, 18.
- 2004** ASR, *142nd Annual Statistical Report—2004*, 18.
- 2005** ASR, *143rd Annual Statistical Report—2005*, 18.
- 2006** ASR, *144th Annual Statistical Report—2006*, 18.
- 2007** ASR, *145th Annual Statistical Report—2007*, 18.
- 2008** ASR, *146th Annual Statistical Report—2008*, 18.
- 2009** ASR, *147th Annual Statistical Report—2009*, 18.
- 2010** ASR, *148th Annual Statistical Report—2010*, 18.
- 2011** ASR, *149th Annual Statistical Report—2013 (for Year Ending December 31, 2011)*, 20.
- 2012** ASR, *149th Annual Statistical Report—2013, Supplement (year ending December 31, 2012)*
- 2013** ASR, *150th Annual Statistical Report—2014 (for 2012 and 2013)*, 14.
- 2014** ASR, *151th Annual Statistical Report—2015 (for 2013 and 2014)*, 16.
- 2015** ASR, *152nd Annual Statistical Report—2016 (for 2014 and 2015)*, 17.
- 2016** ASR, *153rd Annual Statistical Report—2017 (for 2015 and 2016)*, 17.
- 2017** ASR, *155rd Annual Statistical Report—2019 (for 2017)*, 16.
- 2018** ASR, *Annual Statistical Report—2019A, vol. 1 (for 2018)*, 17.
- 2019** ASR, *Annual Statistical Report—2020, vol. 2 (for 2019)*, 7.